

Crime Scene Investigations
VENTURA COUNTY SHERIFF
CRIME SCENE INVESTIGATIONS
SHERIFF

Crime Scene Investigations
VENTURA COUNTY SHERIFF
CRIME SCENE INVESTIGATIONS
SHERIFF
11
Sheriff



VENTURA COUNTY SHERIFF
CRIME SCENE INVESTIGATIONS



1028045

CHEVROLET

4738

VENTURA COUNTY SHERIFF
CRIME SCENE INVESTIGATIONS



1064903

470

Sheriff

Investigations

Investigations

Investigations

































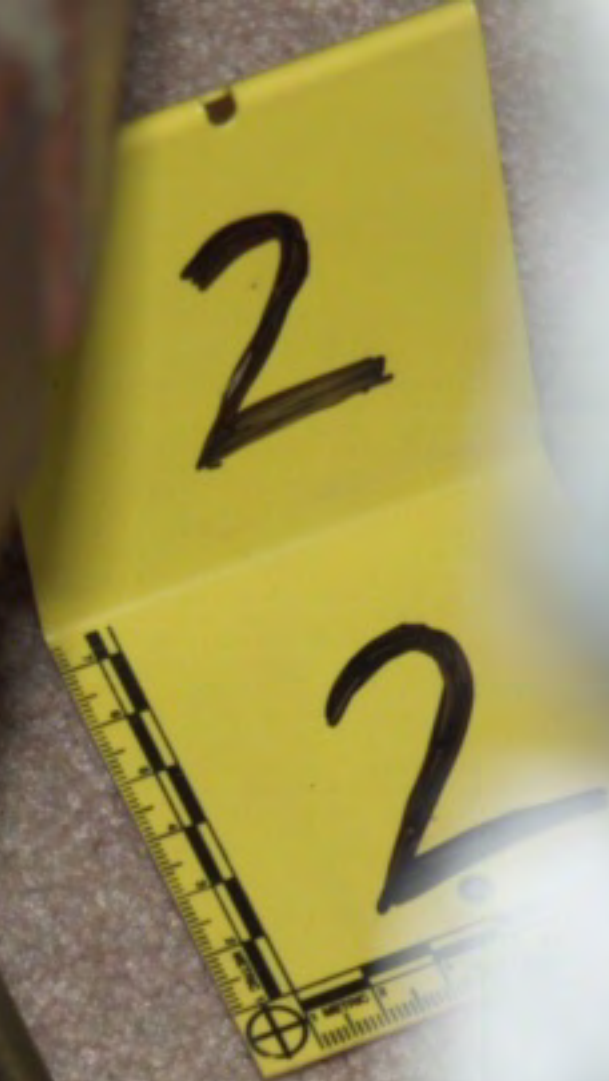


1



2
2











































WELCOME FALL

T



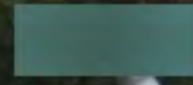
*Crime Scene
Investigations*

**VENTURA COUNTY
CRIME SCENES**



CHEVROLET

4738






























A close-up photograph of a blue padlock with the number 53108, attached to a gold zipper pull on a blue leather bag. The padlock is blue with white text. The zipper pull is gold and has some text on it, including "GT" and "CARRANO". The background is a blue leather surface with a zipper track visible on the left.

53108





























METRIC 1

2

3

4

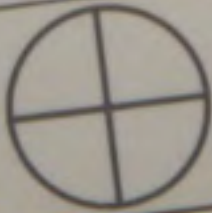
5

6

7

8

9

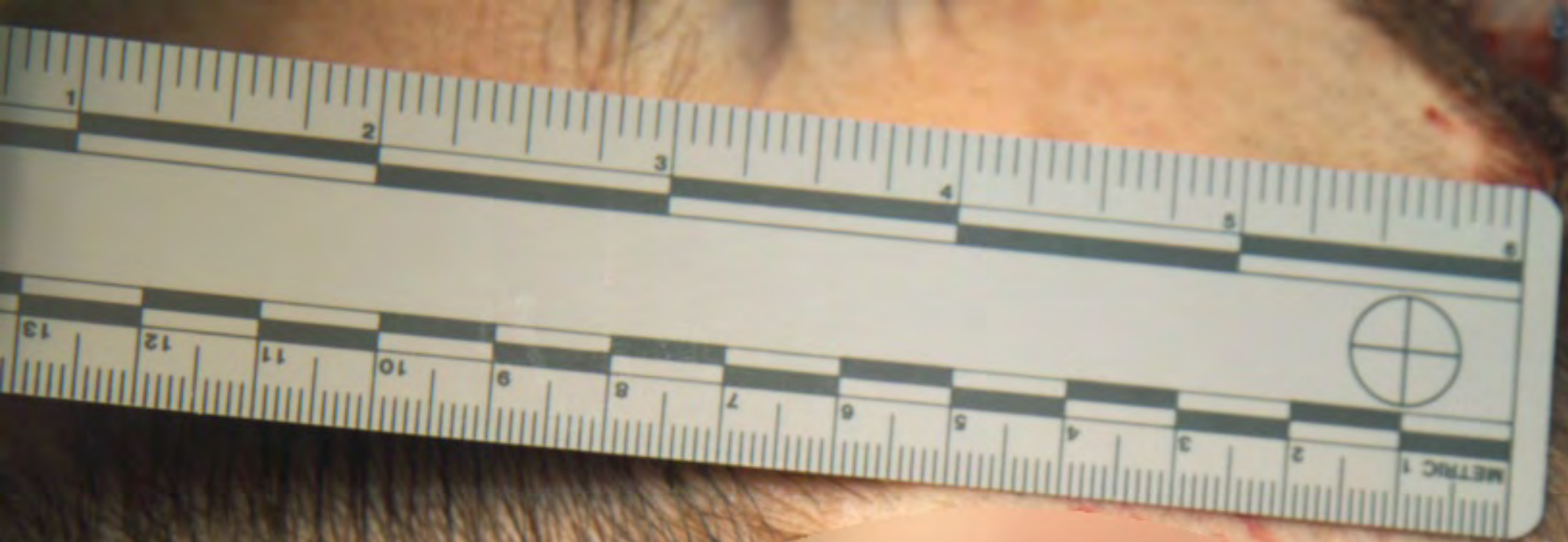


4

5

6

30103



2111-03

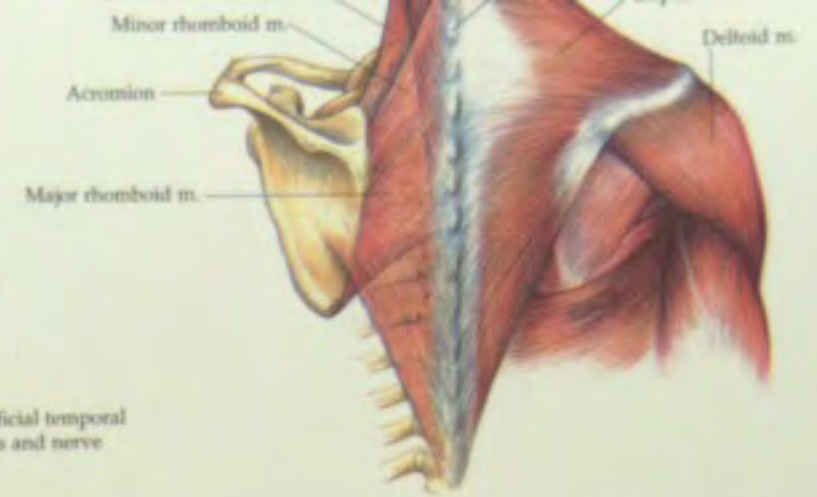




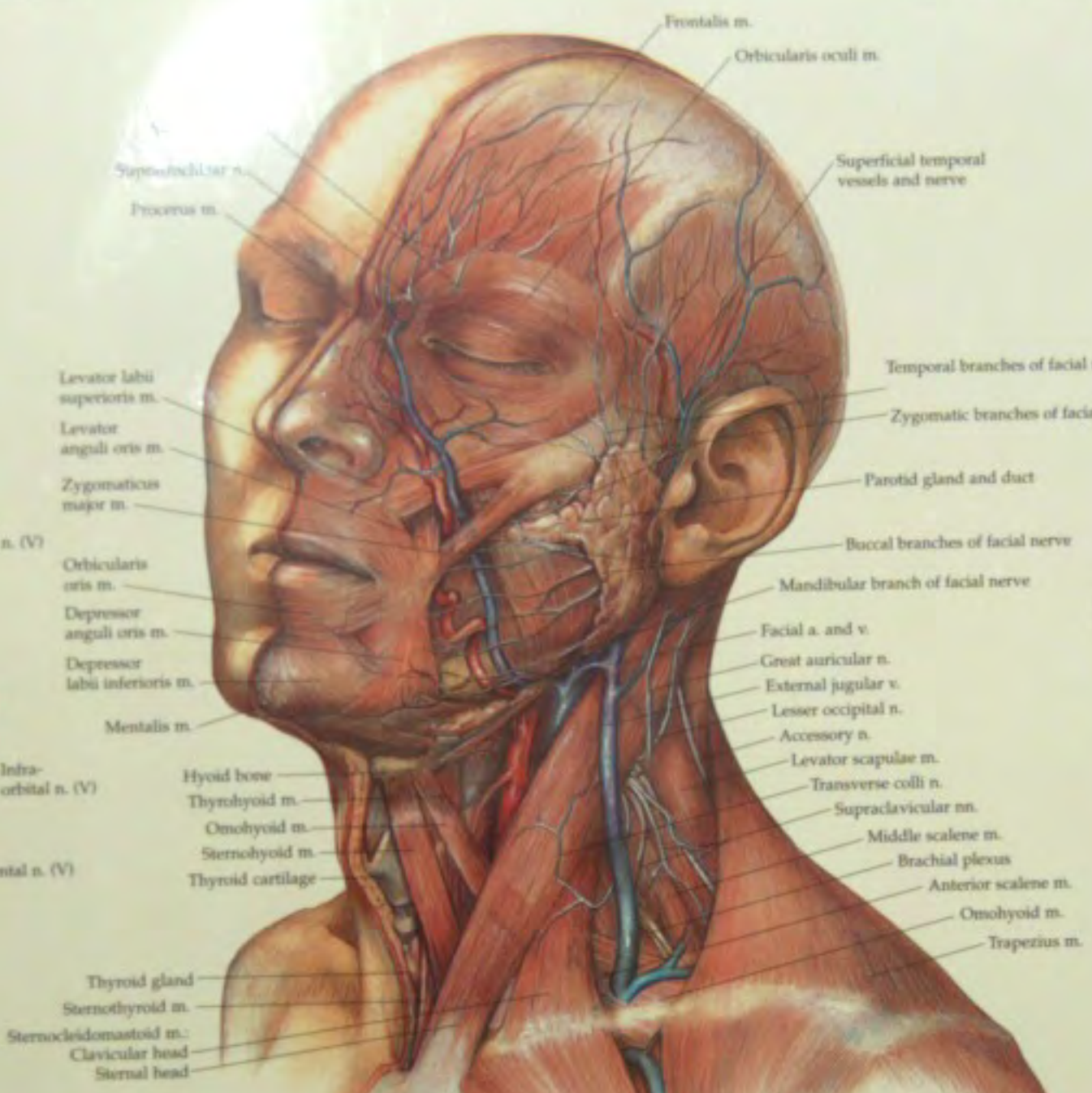




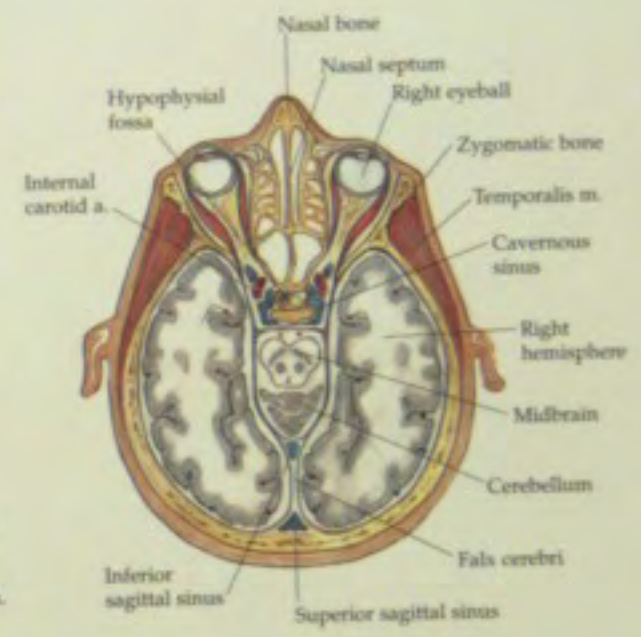




Deep Muscles and Sensory Nerves



Horizontal Section



Internal Carotid and Vertebral Arteries



Deep Structures



Median Section



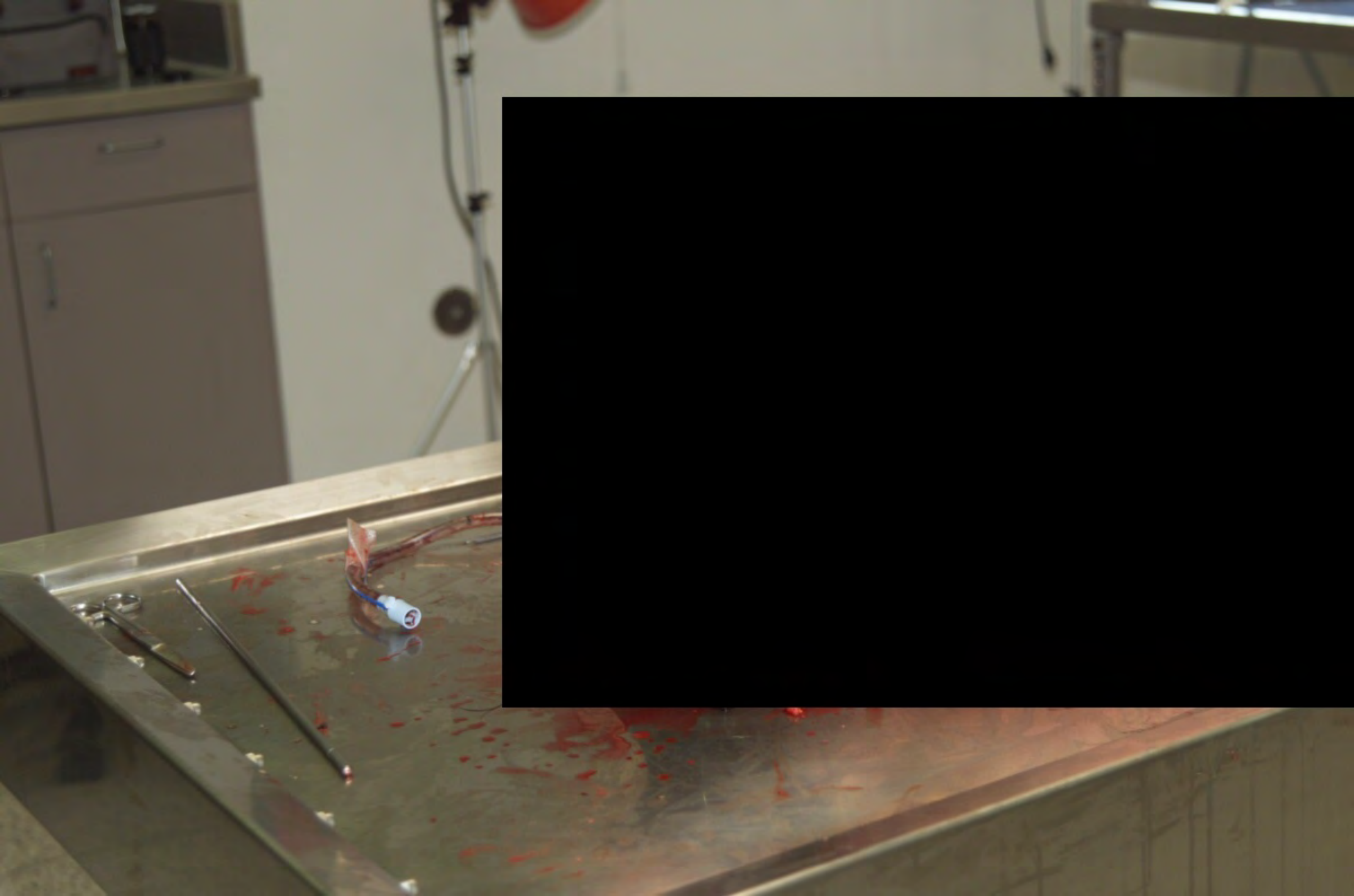




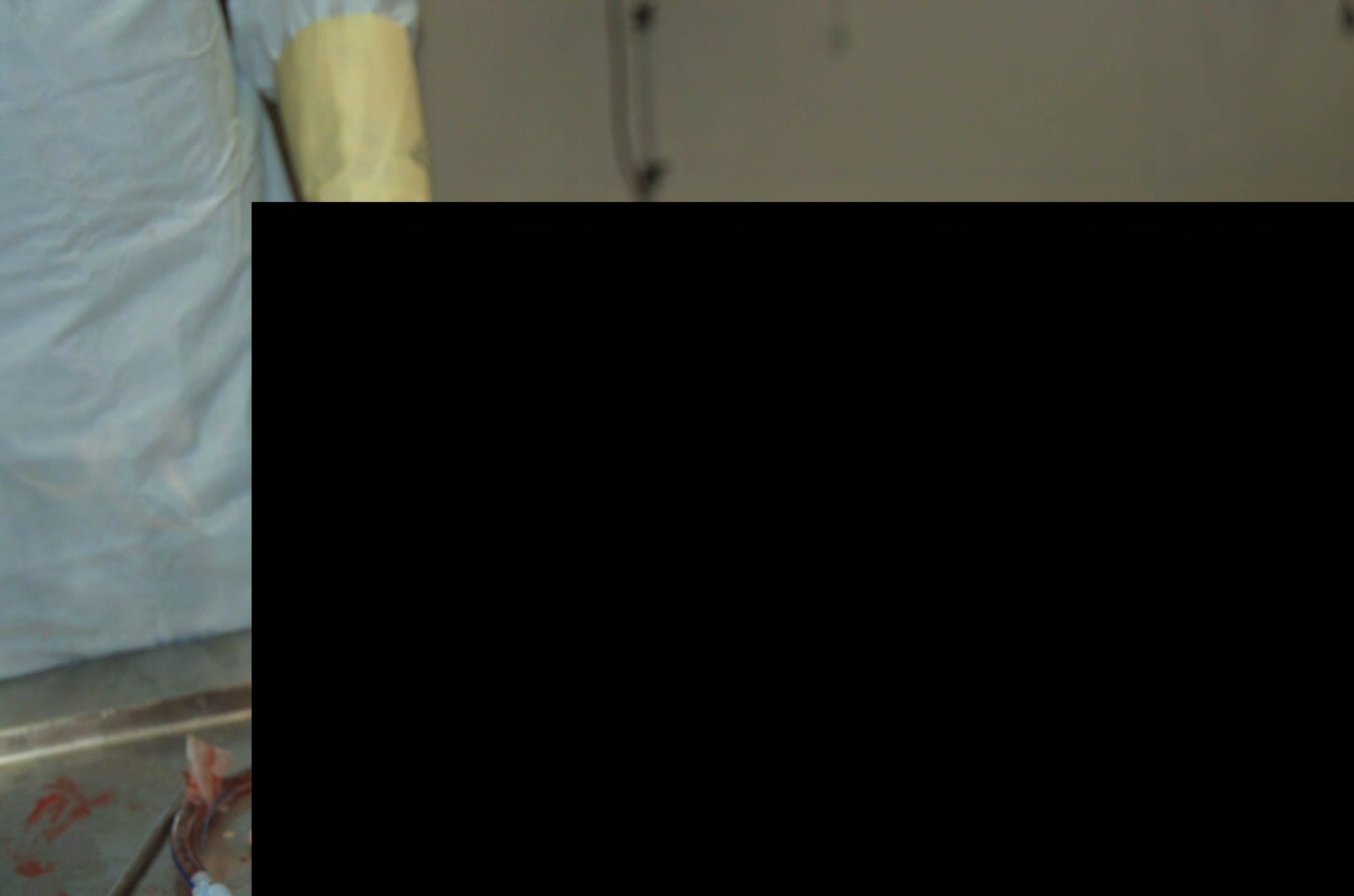


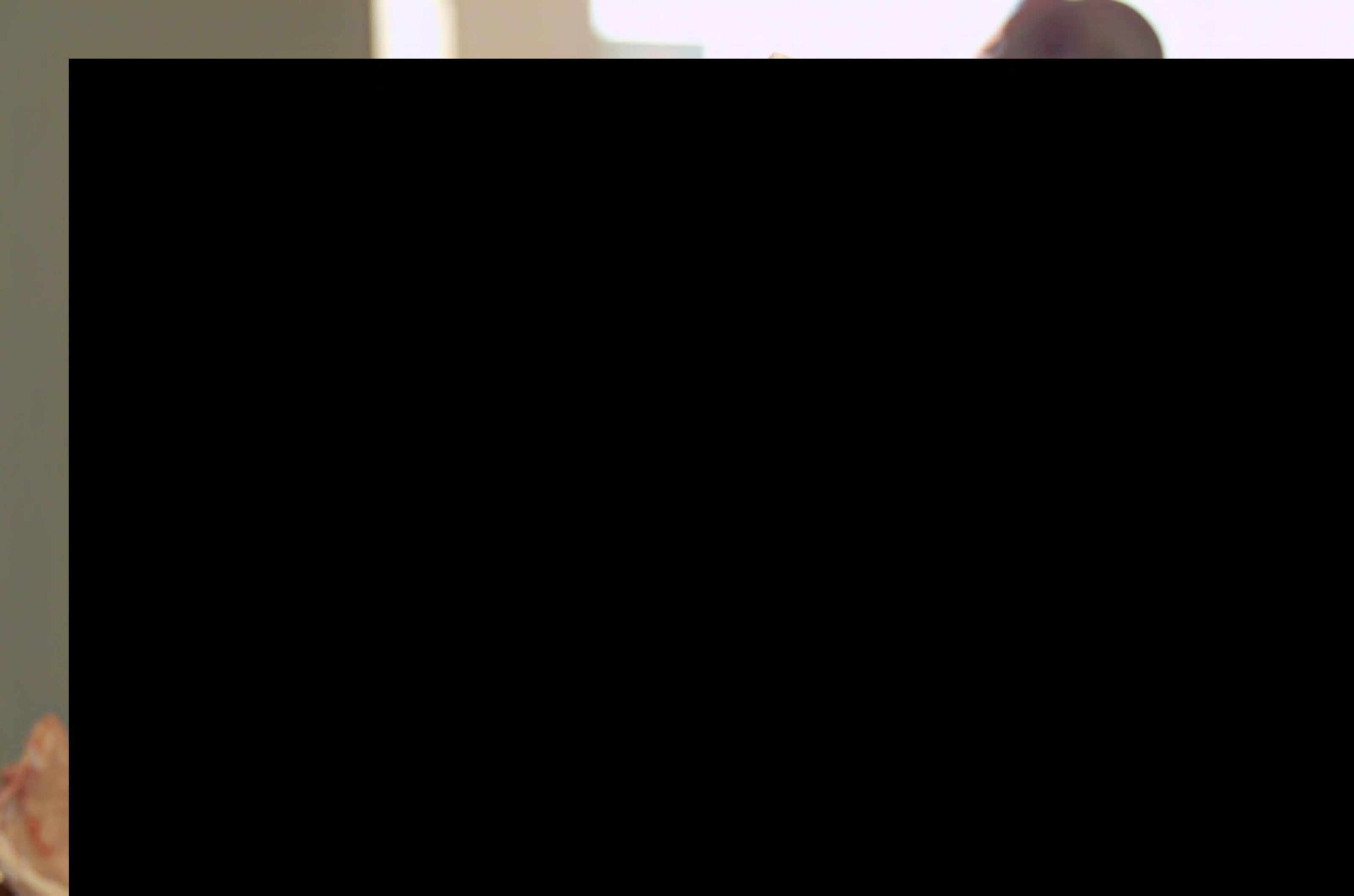






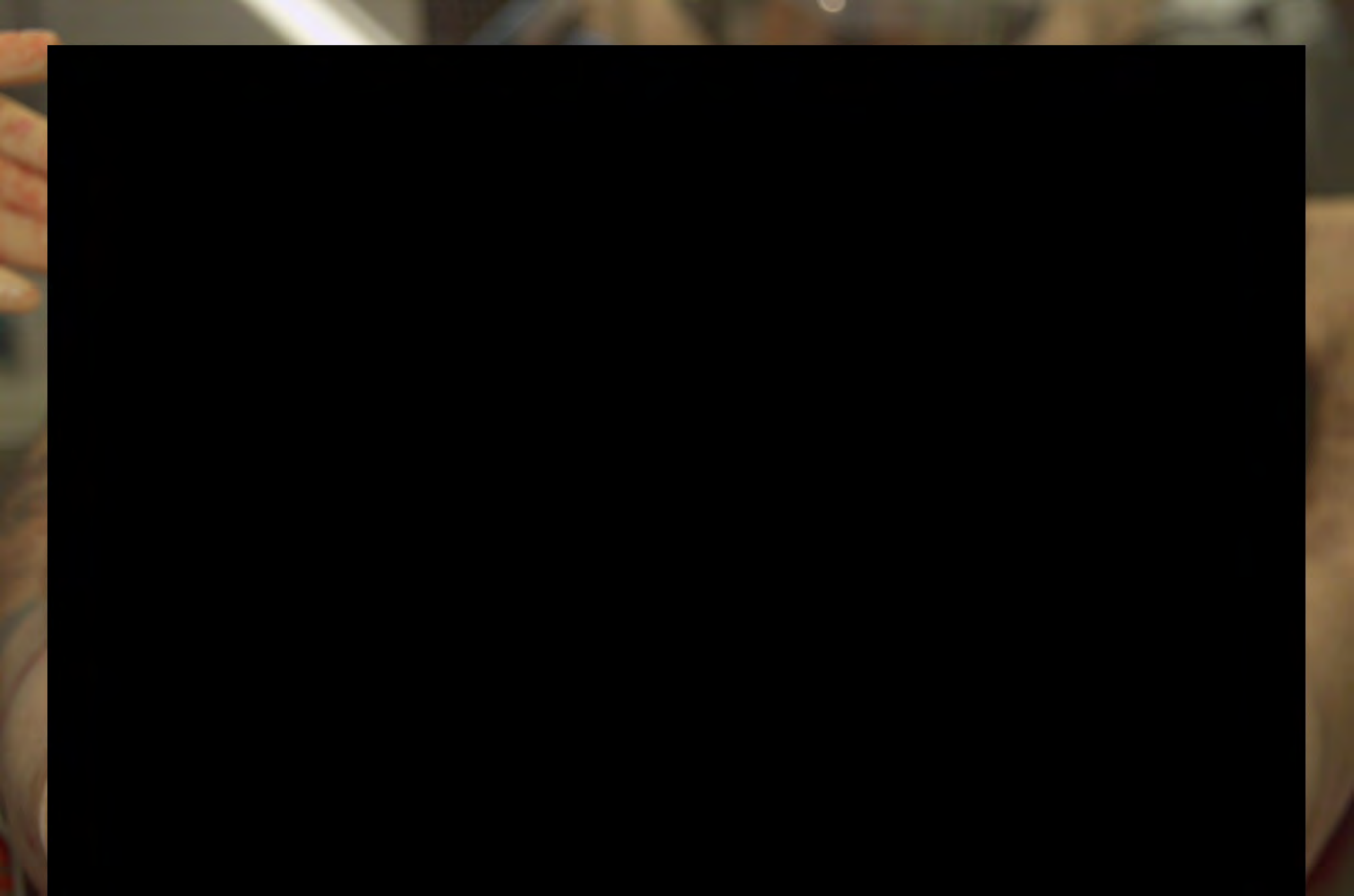
















3

3







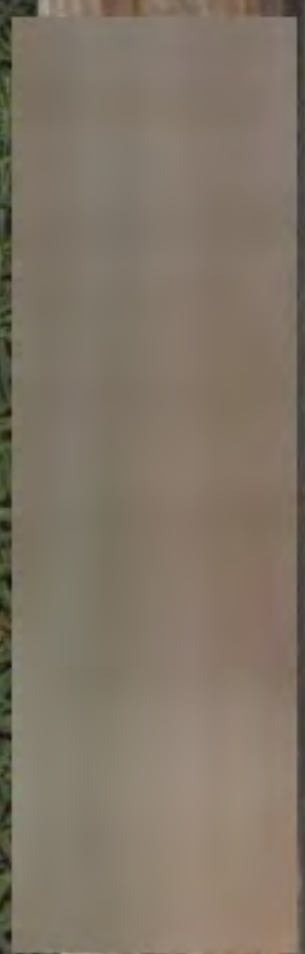
3





3













MAIL
APPROVED BY THE
GENERAL





























0015383

RUBBISH CONTROL
656-5577





































88





White fabric or paper at the top left corner.







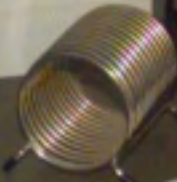
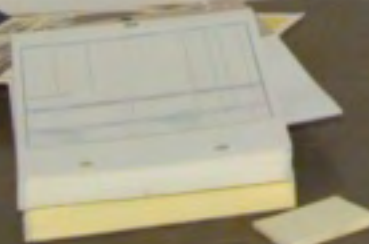


























Counting up
 data about activities
 other than activities
 seen in the other trading submarkets
 in a broader sense, prices are
 not the only thing that matters.

Counting up
 data about activities
 other than activities
 seen in the other trading submarkets
 in a broader sense, prices are
 not the only thing that matters.

Counting up
 data about activities
 other than activities
 seen in the other trading submarkets
 in a broader sense, prices are
 not the only thing that matters.

**Plan would tighten curbs
 on Rocketdyne pollution**
 Regional water board idea studied

**Plan would tighten curbs
 on Rocketdyne pollution**
 Regional water board idea studied

**Plan would tighten curbs
 on Rocketdyne pollution**
 Regional water board idea studied





































03

1	2	3	4	5	6
7	8	9	10	11	12
13	14	15	16	17	18
19	20	21	22	23	24
25	26	27	28	29	30
31					

MedGas 1
MEDICAL GAS SYSTEMS, INC. 1000 2000 3000 4000
1000 2000 3000 4000
MEDICAL GAS SYSTEMS, INC. 1000 2000 3000 4000





































DEVON

Handwritten notes on a yellow folder, including the words "CASS" and "CASS" repeated in a list format.

FACTORY AUTHORIZED PARTS

66-1116
CASSETTE CLEAN

TRAO
M...
1-12-1

FACTORY AUTHORIZED PARTS

FACTORY AUTHORIZED PARTS

FACTORY AUTHORIZED PARTS

WINCHESTER-REMINGTON
DUCK & PARTRIDGE
2 1/2 70 91 65 25

AVERTISSEMENT: Pour éviter tous incidents: (1) utilisez uniquement dans des armes à feu en bon état marquées et chambrées pour cette cartouche; (2) assurez-vous que le canon n'est chargé; (3) portez une lunette de protection pour les yeux et les oreilles. L'arme ne fait feu qu'une fois. Ne maniez pas l'arme si elle est chargée. Ne maniez pas l'arme si elle est chargée.



Applications:
• Recreational Shooting: Trap, Skeet, Sporting Clays,
and Hand Trap
• Upland Game Birds

LEAD WEIGHT: 16 grains
VELOCITY: 1200 ft./sec.
MAGAZINE CAPACITY: 5
CALIBER: 12 GA.
LENGTH: 2 1/2 in.

Don

0610



HT 680 006

Fiscal
T-120

DEVON

30

20

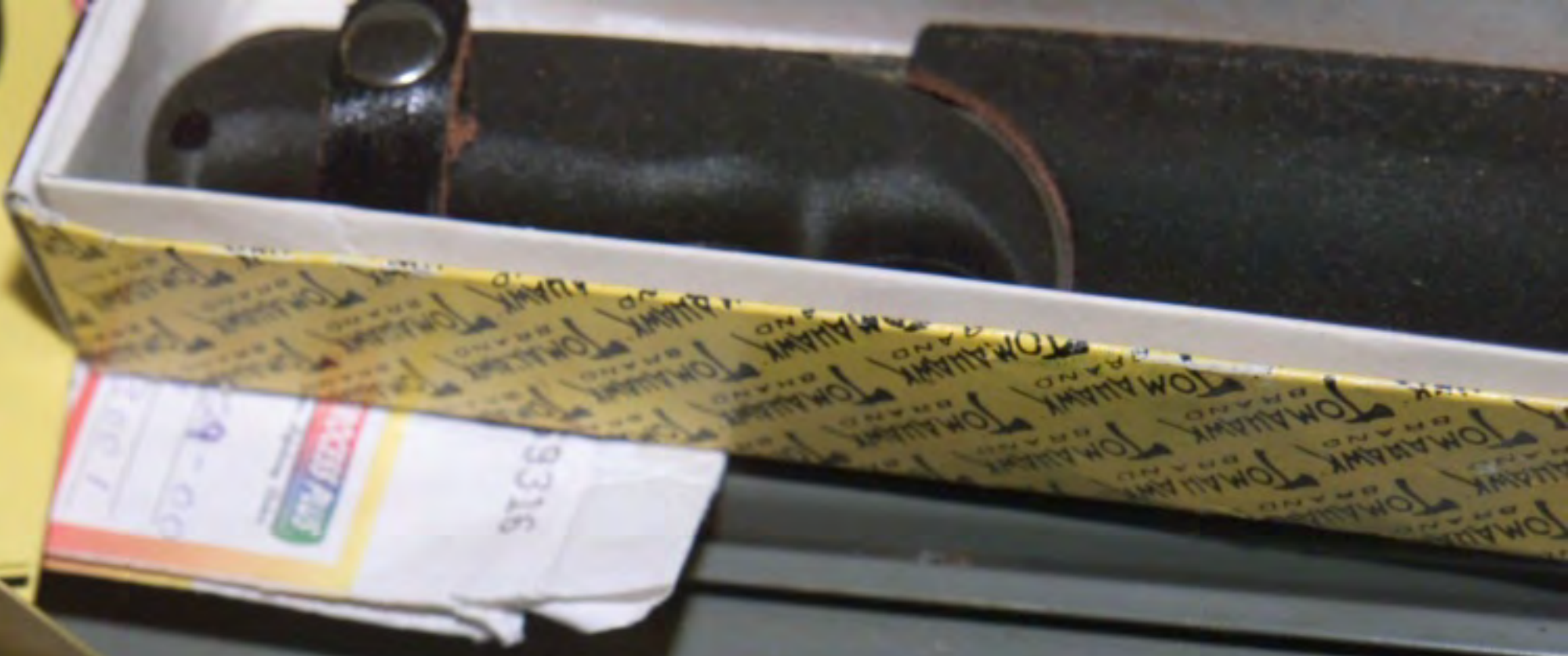
30

29

29

30

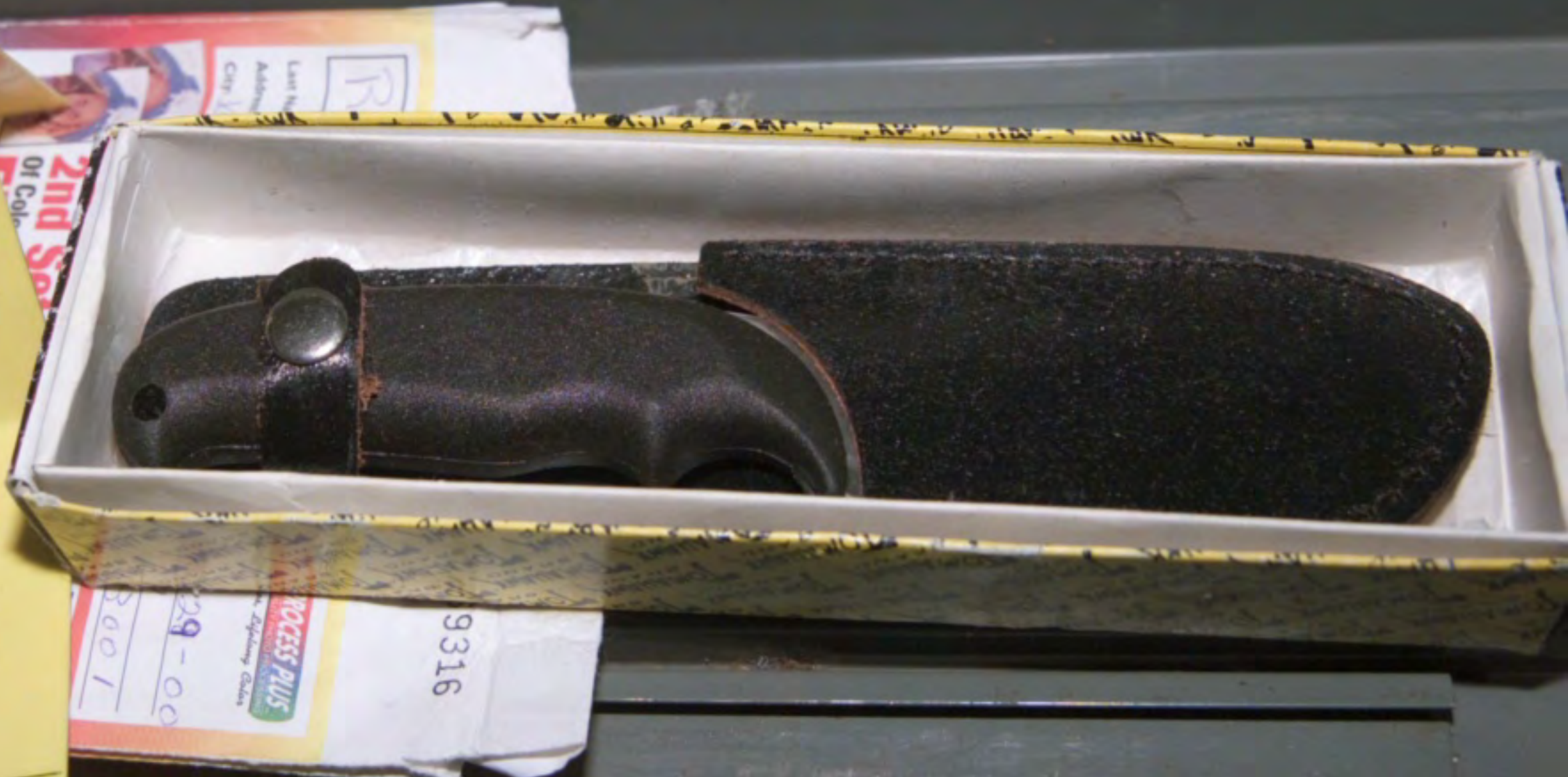
30



9316
 9-06
 9316



30
30



Process Plus
9316
3001
29-00

Last Name
Address
City
State
Zip

2nd Step
Of Color

Matte Finish

From 30mm Available
Advanced Photo System
At Time Of Development.

800-333-3901

7/7/00

Preclude

© 1999 Kodak





2A

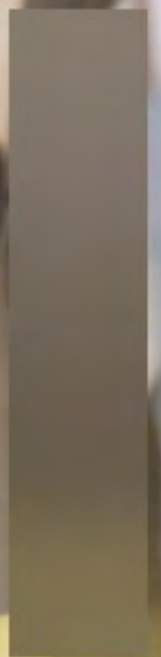


24

24



13



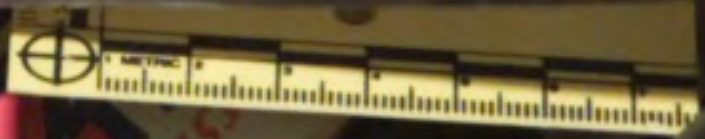


IMPERIAL
CREAM CHEESE
012574
SYSCO
SYSCO
SYSCO
SYSCO
SYSCO
SYSCO
SYSCO
SYSCO
SYSCO

37

PLASTIC S
WARNING: Keep
See All Warnings on

STERIL-Maxxon





12

27

8

6

7

4

5

9

11

10



5

6

7

27

12

10

11

9

8

Zoo LIFE
Zoo LIFE
Zoo LIFE
Zoo LIFE



4

5

6

7





5
5

5

6

7



...ans of committing a public offense or
...delivered it for the purpose of
Section 371.3, has
...PROPERTY DESCRIBED HEREIN MAY
...SEIZABLE PURSUANT TO PENAL CODE
...POLICEMAN OR PEACE
...at the
...thly
...NO





EVI-PAC™ 18075 377-0450



9

9

10

11

11

11

9



6

6

CAMEL
FILTERS
HARD PACK







12

26

27

... would ...
... ..
... ..

12

26

27

13



GOLDEN GAIT
LEDBROKE RACING



12



12



Plan would tighten curbs on Rocketdyne pollution

Regional water board idea studied
By Roberta Freeman

The Los Angeles Regional Water Quality Control Board is studying a plan to tighten curbs on Rocketdyne's pollution in the San Gabriel Valley. The plan would create a regional water board to oversee the area's water quality, a move that would give the agency more power to regulate the plant's operations. Rocketdyne, a major contractor for the U.S. space program, has been the focus of a long-running legal battle over its discharge of pollutants into the San Gabriel River. The current regional board has been criticized for being too weak to enforce the rules. The new board would have the authority to issue permits, set standards, and enforce penalties. It would also have the power to shut down the plant if necessary. The plan is still in the early stages of development, but it has already drawn the attention of local residents and environmental groups. They are concerned about the health and safety of the community, which has been plagued by air pollution and water contamination for years. The regional board is expected to make a final decision on the plan in the next few months.

Coming up

Clubs around the area are planning a series of events to celebrate the centennial of the founding of the city. The events will include a parade, a concert, and a fireworks display. The parade will take place on the main street of the city, and will feature floats from various clubs and organizations. The concert will be held in a large outdoor arena, and will feature performances by local and national acts. The fireworks display will be the highlight of the celebration, and will be set off over the city at night. The events are expected to attract thousands of people, and will be a major attraction for the city.

Viewpoint

In his victory speech, Mr. Schmidt said that the new administration would be committed to a policy of peace and cooperation. He said that the United States would continue to support the principles of democracy and human rights, and would work to bring about a just and lasting peace in the Middle East. He also said that the United States would continue to support the free world, and would work to bring about a new era of global cooperation and understanding. Mr. Schmidt's speech was widely praised, and was seen as a clear statement of the new administration's priorities. It was also seen as a message of hope and optimism for the future.



14

15

16

1



14

15



15

14

PROPERTY TAG

PROPERTY TAG

PROPERTY TAG



15



16



EVIDENCE PROPERTY TAG
PROPERTY NO. 4802
DATE 11/11/00
BY [illegible]
LOCATION [illegible]
DESCRIPTION [illegible]

EVIDENCE PROPERTY TAG
PROPERTY NO. 4803
DATE 11/11/00
BY [illegible]
LOCATION [illegible]
DESCRIPTION [illegible]

16

17



18





19
19



19

19

EVLPAQ™ (800) 377-0450 Patent Nos. 5,815,852/5,797,619



20

DL-PAG™-0001 217-0450 Patent No. 5819825/57618







22
23

—







25

25

25

25





EVI-PROOF™ (800) 377-0450 - Patent Pending

25

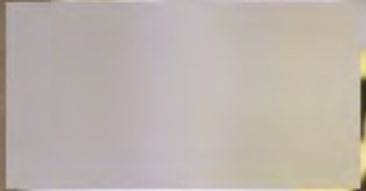
25

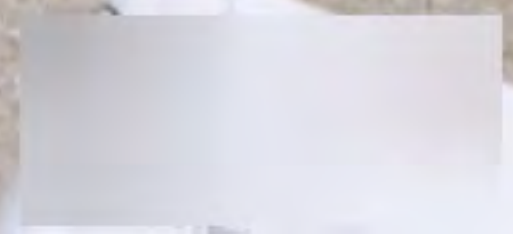


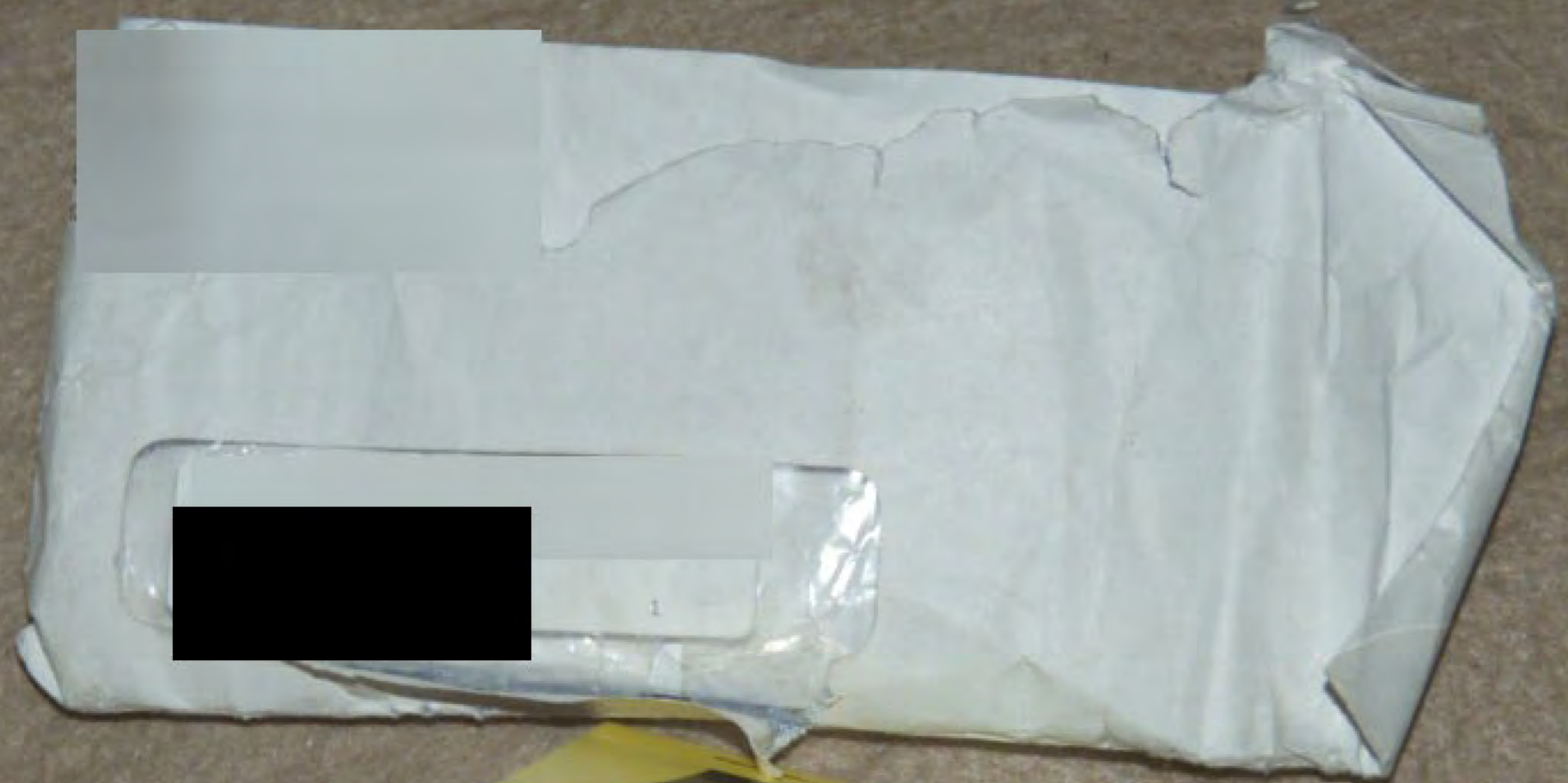
27

26

27









A photograph of a wooden deck with a yellow evidence marker labeled '32'. The marker is placed on a dark grey composite deck board. To the left is a reddish-brown wooden railing with vertical balusters. To the right is a white door with a decorative lattice pattern. The deck surface is scattered with small, light-colored debris.

32

32

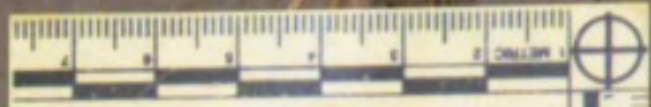
32



A photograph of a wooden deck with evidence markers 33 and 34. The deck is covered with a layer of brown, dried leaves. A red railing is visible on the left side, and a dark wooden fence is in the background. The markers are yellow with black numbers.

34

33



33

33

33

© 1997-2000 L.E. Walcott & Co. - Patent Pending



34

34

34

© 1997-2000 L&L 317-8400 - Patent Pending







36
36
EVI-PAD™ (800) 377-0450 • Patent Pending





36



College Student Notebook
Spiral Notebook

27
37
EVI-PAC™ (800) 377-0450 • Patent Pending





38



39





39

39

39



Engineering

40

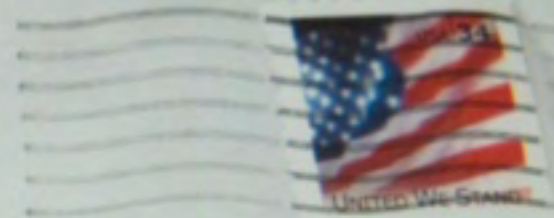
Don Aire

LETTERS

LETTERS

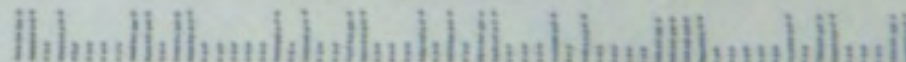
40

SANTA ANA CA 92705
PM
3 MAY
2002



Pierre L. Reed I

93023+2651







41

WARNING: Contains CFC-11 and CFC-12, and manufactured with CFC-112 and methylchloroform, substances which harm public health and environment by destroying ozone in the upper atmosphere.

AVERTISSEMENT: Ce produit contient CFC-11 et CFC-12, et il est fabriqué avec CFC-112 et chloroforme méthylique, des substances nuisibles à la santé publique et à l'environnement par sa destruction l'ozone dans l'atmosphère supérieure.

Distilled & Filtered
Vodka
40% Alc/Vol (80 Proof)
100% Grain Neutral Spirits
No Sugar Added
No Artificial Flavors
No Artificial Colors
No Preservatives
Net Volume 750 mL (25.36 FL OZ)
Net Weight 1.67 kg (3.68 lbs)
ZuPreem

LUCERNE
INTERNATIONAL
From Lucerne
To Your Family
Lucerne has proudly provided American families with wholesome milk since 1904. Each milk case is made with the finest dairy products from the Swiss Alps. Our products include a wide variety of butter, cheese, yogurt and ice cream, all with the same attention to quality and great taste you can depend on Lucerne to deliver. From the farm to your family, Lucerne is your natural choice.

Cajun Pick

Embrace: Formulated with moderate protein... (lookbills) and passerines (softbills...)
Please review the following information...

Business and Sanitation
Proper levels of sanitation when handling birds are essential to gram-negative bacteria, certain viruses and other pathogens.
Wash hands thoroughly before handling birds.
Clean, disinfected utensils (not long spouts) and feeding surfaces clean, dry and disinfected.
Use separate utensils for each bird to help prevent disease.
Do not store or reheat mixed formula - make a fresh batch.

- Complete Mixing Instructions**
1. Add the appropriate amount of warm water (approximately 12°F cooler than room temperature) to the formula (see Proper Feeding Consistency). Mix thoroughly to obtain consistency.
 2. While tap water may be used, there may be high levels of bacteria in tap water, making it an unattractive alternative.
 3. Allow 1 1/2 - 2 minutes for the formula to absorb the water before feeding.
 4. Use a thermometer to check the temperature of the formula. Formula temperature should be between 100-110°F. If using a microwave oven, thoroughly stir the formula to avoid "hot spots" that could cause crop burns.
 5. As a rule of thumb, each feeding should consist of a volume equal to 1-2% of the bird's body weight, depending on the species of the bird - approximately a milliliter of formula per gram of weight. Newly hatched chicks may require smaller amounts.

Proper Feeding Consistency
Embrace Plus formulas should be mixed to the correct consistency for the bird's stage of development. Formulas that are too thick or too thin can cause stunting, or other developmental problems. Formulas that are too thick can cause serious health problems.

Age 1-3 Days
Newly hatched chicks may require formula that is no thicker than a "broken egg" (one part formula to two parts water). Separation of mixed product is not uncommon when preparing a new batch. In hydration and can benefit a younger chick that needs more water the first few days of the feeding process to ensure adequate delivery of nutrients.

Age 4-14 Days
Slowly, over the course of the next 10 days, thicken the formula every one to two days to reach the consistency of baby applesauce (approximately 1 part formula to 3 parts water). Adjust feeding frequency based on the bird's weight gain.

Age 14 Days to Weaning
After 14 days, the bird should be able to eat a mixture of one part formula to two parts water. If at all of concern, return to feeding a thinner formula. Consult your local ZuPreem Certified Avian Specialist at 1-800-441-4411.

- Assess Proper Amounts to Feed**
- Have an experienced avian professional assess the bird's crop.
 - Learn how to properly assess the bird's crop.
 - Feed until the bird's crop is nicely full.
 - To prevent regurgitation, do not overfeed.

ZuPreem
Made in U.S.A.

41

41



Lucerne has provided American families with world-famous fresh milk for over a century. Our family-owned Lucerne dairy products also includes a variety of butter, yogurt and ice cream, all with the same attention to quality and great taste that depend on Lucerne's commitment to deliver. From the farm to your family, Lucerne is your natural choice.







Mucil
FIBER SUPPLEMENT
TEXTURE
FLAVOR
14 TEASPOON DOSES

Mircosol
ULTRA STRENGTH
ANTACID

[Redacted]

[Redacted]

[Redacted]

2







43

VENTURA COUNTY
STAR
www.insidevc.com

388036

EDITION:
Ventura County
Thousand Oaks
Oxnard
Simi Valley
Camarillo
Moorpark

26
Weeks

\$13
Price

Home Delivery
Daily
W/E Plus
Sun. Plus
E-Star

SATISFACTION GUARANTEED

On paid orders, your new subscription payment will be refunded if after 30 days you are not satisfied. To qualify, mail your payment receipt and written statement of why you don't like the product or service to Circulation Director, Refund, P.O. Box 6711, Ventura, CA 93006. Service Problems 1-800-221-STAR

Deliver to: Mrs. Ms. Mr. Please print
Phone number required to establish account.

Name Pierre Re

Addr

City

Payment:

Card #: _____

Cash: 13 paid

Check#: _____

Please include last Sunday's paper at no additional charge.

Signature [Signature]

Date: _____

Sales Person: [Signature]

Team#: 58

Sorry, offer not available to present subscriber, you must be a non-subscriber for over 30 days. Delivery will begin in _____



OFINA

rane

44

UNIT-20
MTC 201000
Transportation
Up to \$500,000 Five
Year Term
MTC 201000
Transportation
Up to \$500,000 Five
Year Term

INGI

Forane
409A

44
44

INSIDE CYLINDER
COMPLIES WITH
PRESCRIBED
SPECIFICATIONS

DO NOT INFLAMMABLE GAS

DO NOT SUITABLE FOR
PRESSURED AIR DO NOT INCINERATE.



PRICE AMOUNT

T 35 10

VALVE & 2 819 55 5 2000

7/11 X

03 080 HOWDYS CYCLE SALES
3740 Transport Street, Suite 1
VENTURA, CALIFORNIA 93003
(805) 654-7096

NAME PARRÉ



NATURE OF SERVICE

RR KICK
CARB

TOTAL MATERIALS

on other side

BY



























































































Sherin





46

46
46





46

A yellow evidence marker with a ruler at the top and a small crosshair symbol in the upper right corner. The number '46' is printed in large, bold, black font. The marker is placed on a dark, textured surface.

9.17

The number '9.17' is printed in large, bold, black font on the middle section of the yellow marker.

46

The number '46' is printed in large, bold, black font on the bottom section of the yellow marker.

















43









COUNTY SHERIFF

1099792



VENTURA COUNTY SHERIFF

2616801





















38

47



Systemic Rose & Flower Care

47

47

47





39

38













ZuPreem
MADE IN U.S.A.



Embucci's
Charcoal Filtered
Vodka
40% ALC/VOL (80 Proof)
Distilled from Grain
Bottled by
Embucci's Distilling Products, Ltd.
Livermore, CA



LUCERNE
VITAMINS A & D
Reduced Fat Milk
2% Milkfat
5% LIGHTER THAN WHOLE MILK
Quality Dairies
Since 1904

INTERNATIONAL PAPER

**From Lucerne
To Your Family**

Lucerne has proudly provided American families with wholesome, farm-fresh milk since it was established as a dairy farmers' cooperative almost one hundred years ago in 1904.

Our family of fine Lucerne dairy products also includes a wide variety of butter, cheese, yogurt and ice cream, all with the same attention to quality and great taste you can depend on Lucerne to deliver. From the farm to your family, Lucerne is your natural choice.

AN EXCELLENT SOURCE OF PROTEIN & CALCIUM
HALF-GALLON (1.89 L)

ZuPreem
Embrace Plus
 Visit ZuPreem.com for complete feeding instructions in English, French and Spanish.

Complete nutrition. Embrace Plus is a complete, balanced, and highly digestible formula. By feeding Embrace Plus, you ensure your bird receives all the nutrients and vitamins it needs to stay healthy and happy. Embrace Plus is formulated with a blend of high-quality ingredients, including vitamins, minerals, and amino acids, to support your bird's overall health and well-being.

Key Benefits:

- Balanced nutrition to support overall health
- Supports immune system and helps prevent illness
- Aids in maintaining healthy weight and body condition
- Highest quality ingredients and manufacturing
- Contains the probiotics you need for a healthy gut
- Exclusive ZuPreem Blend™ helps support overall health
- Recommended by avian veterinarians and breeders
- Backed by 40 years of experience in avian nutrition

Embrace Plus: Formulated with vitamins, minerals and high quality ingredients to support your bird's overall health and well-being. It is a complete, balanced, and highly digestible formula.

Embrace: Formulated with moderate amounts of protein, fat, and carbohydrates to support your bird's overall health and well-being. It is a complete, balanced, and highly digestible formula.

Complete Mixing Instructions:

1. Add the appropriate amount of Embrace Plus to warm water (approximately 100°F / 38°C) in a clean container.
2. Mix thoroughly to achieve a consistency similar to a thick liquid.
3. Allow 1 to 2 minutes for the formula to absorb the water before feeding to your bird.
4. Use a thermometer to check the temperature of the formula. Embrace Plus should be served at a temperature between 100-110°F / 38-43°C.
5. If using a microwave, thoroughly stir the formula to avoid hot spots that could cause crop burns.
6. Each feeding should consist of approximately 1-2 ml of formula per 100g of body weight.

LUMBER CRAI
CRAIE GRASSE POUR MAQUAGE • CNET



INTERNATIONAL PAPER

From Lucerne To Your Family

Lucerne has proudly provided American families with wholesome, farm-fresh milk since it was established as a dairy farmers' cooperative almost one hundred years ago in 1904.

Our family of fine Lucerne dairy products also includes a wide variety of butter, cheese, yogurt and ice cream, all with the same attention to quality and great taste you can depend on Lucerne to deliver. From the farm to your family, Lucerne is your natural choice.



Emblice
ZuPreem
NET WT 12.5 OZ (354g)
PREPARED BY ZUPREEM, INC. - V.I.C.A.

Smirnoff
Vodka
40% Alc/Vol (80 Proof)

48

INTERNATIONAL PAPER
From Lucerne
To Your Family
Lucerne has proudly
provided American
families with wholesome,
farm-fresh milk since it
was established as a dairy
farmers' cooperative
almost one hundred years
ago in 1904.
Our family of fine
Lucerne dairy products
also includes a wide
variety of butter, cheese,
yogurt and ice cream,
all with the same
attention to quality
and great taste you can
depend on Lucerne to
deliver. From the farm to
your family, Lucerne is
your natural choice.

WARNING: Contains
DPC-11, DPC-12, and
DPC-13, which are
substances which harm public
health in an environment by
degrading ozone in the upper
atmosphere.
ADVERTISEMENT:
Do not consume DPC-11 or
DPC-12 at 2 and 4 hours after
meals, and substances
DPC-11 and DPC-12 are
not recommended for use
after 11:00 a.m. or after
1:00 p.m. after meals.



49









OJAI RUBBISH
656-5577

50

VODKA

TEQUILA

TEQUILA



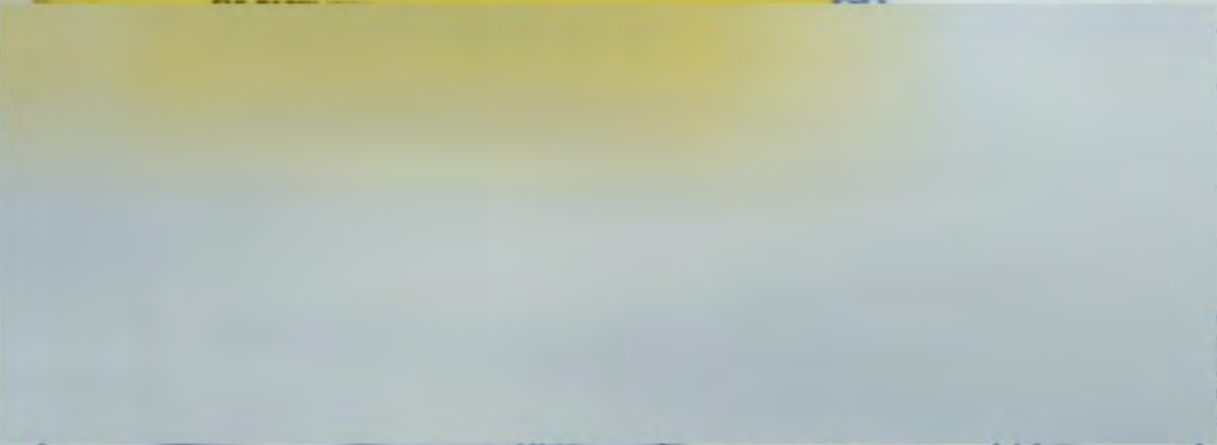




51



51



3	MATERIALS:	
	TAX:	
	LABOR:	
	LINE:	
AMOUNT		
50	00	
FOR LOSS, OR DAMAGE		
		4287
Re-order #4L455		

QUANTITY	5	LBS R-22 Freon
----------	---	----------------

Per Request checked A/C found out of Freon, found leak at suction Comp fitting tightened OK Re-charged OK

LABOR PERFORMED:

THANK YOU

1200

TOTAL MATERIALS:	50	00
TAX:	3	63
TOTAL LABOR:	68	00
Minimum		
TOTAL AMOUNT:	121.63	

EVI-PAQ™ (800) 377-0450 • Patent Pending

22

DATE: 10/23/03

MATERIALS:

TAX:

LABOR:

UNIT:

AMOUNT

50 00

QUANTITY

5 LBS R-22 Freon

Per Request checked A/C found out of Freon, found leak at suction Comp fitting Tightened ok Re-CHARGED ok

FOR LOSS, OR D

428

Re-...























THE JUNK
HOUSE

Light switch

88
Electrical outlet











