



Daily Dr

2





USA
mini mart



Daily Dr

W









ROAD

DAILY DR

POLICE

NO LEFT TURN

ROAD



ST. JOHN UNIVERSITY
1011
W. UNIVERSITY AVE.

1011
W. UNIVERSITY AVE.

H. Dewey Dr

Right Turn Yield
No Left Turn

No Left Turn

POLICE







NO
PEDESTRIANS

Valero logo: a green 'V' inside a circle with the word 'VALERO' below it.

Super	2.99
Plus	2.69
Diesel	3.59



Carmen Dr



VALERO

REGULAR	2599
MID GRADE	2699
PREMIUM	2799



Carmen Dr



239.2616
239.2716
278.2816
486.2916





Daily Dr





Daily Dr



Daily Dr



Daily Dr

↑
↘



VENTURA COUNTY SHERIFF
POLICE





VENTURA COUNTY SHERIFF

1L54738

POLICE

TRUCK







SHAKE JINTI

511 782



VENTURA COUNTY SHERIFF

1454738

POLICE

304015





VENTURA COUNTY SHERIFF

CA EXEMPT
1454738

304015

POLICE



Carmen Dr



USA
mini mart



NO PARKING









Police

City of Camarillo

VENTURA COUNTY SHERIFF

304015

POLICE

1454738



N/S













Police

NO PARKING



40

USA





Bank of America
ATM

34

Handwritten red markings on the sidewalk.

Handwritten white markings on the asphalt.



Advertisement sign with yellow and blue background.

Pine Tree
Water Tower

54

Handwritten red markings on the sidewalk.



Police

East W

East W

East W



54

Police

Dolly Dr



40

54





Michael's
BIGLOTS

40

Sheriff

LT







54

VENTURA COUNTY
FIRE DEPT.

40





Carnegie West
Kroger's
BIG LOT'S

SPEED LIMIT
40



WALTON
MOTOR

40



40

NO STOPPING
OR PARKING





The Village Inn

40











54

VICTORIA COUNTY

FIRE DEPT.

Service to Community
DANIELLO







































































SPEED LIMIT
40

CITY HALL



SPEED LIMIT
40









SPEED
LIMIT
40



Michaels
BIG CUTS

SHERIFF
SANTA CLAY COUNTY

SPEED
LIMIT
40







SPEED
LIMIT
40

Green street sign



SPEED
LIMIT
40

NO
LEFT
TURN

525
←

APR



1362784

SPEED
LIMIT
40

Handwritten white markings on the asphalt, including a large 'U' shape and some illegible text.

Handwritten white markings on the asphalt, including the number '295' and an arrow pointing down.





CAMPA





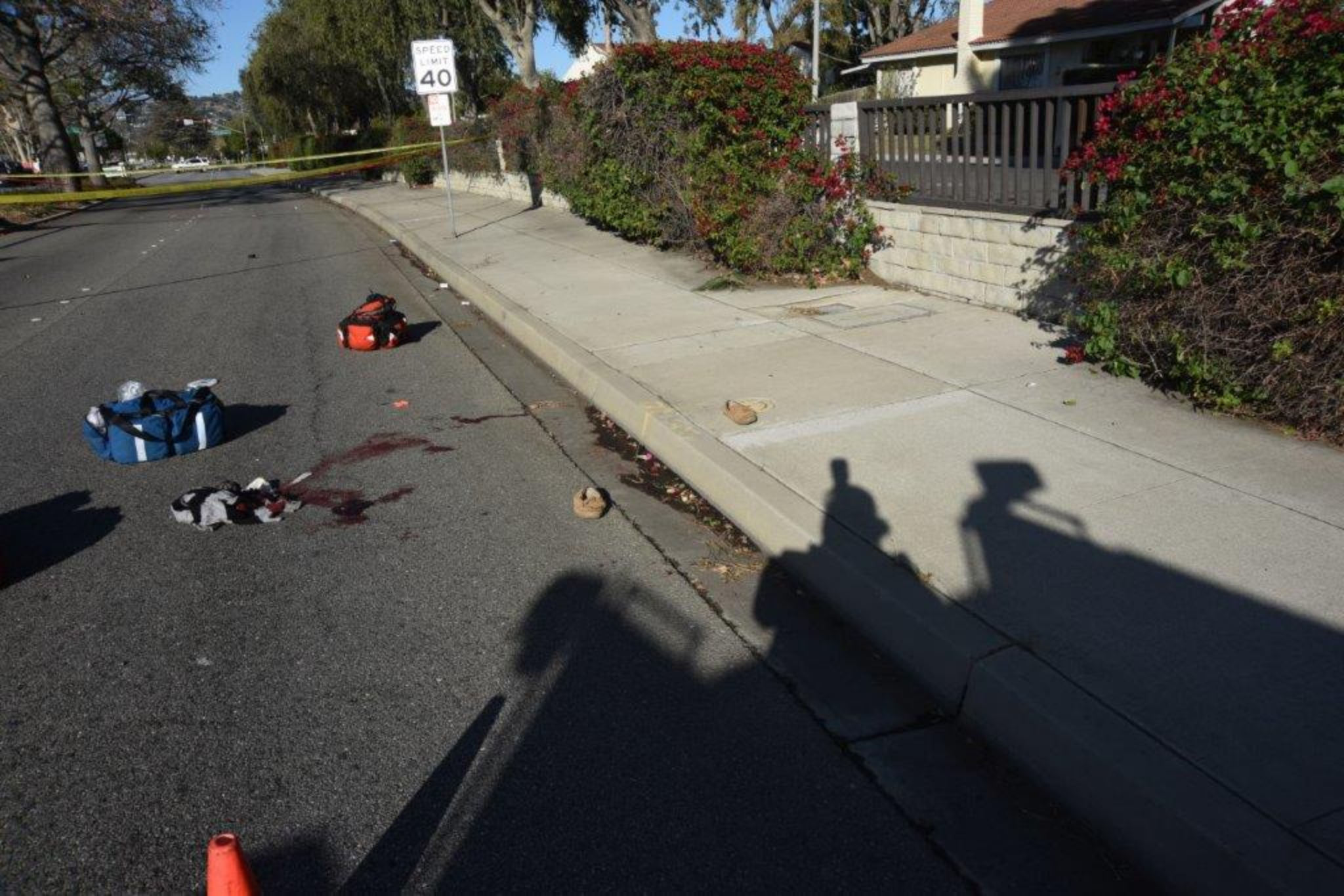






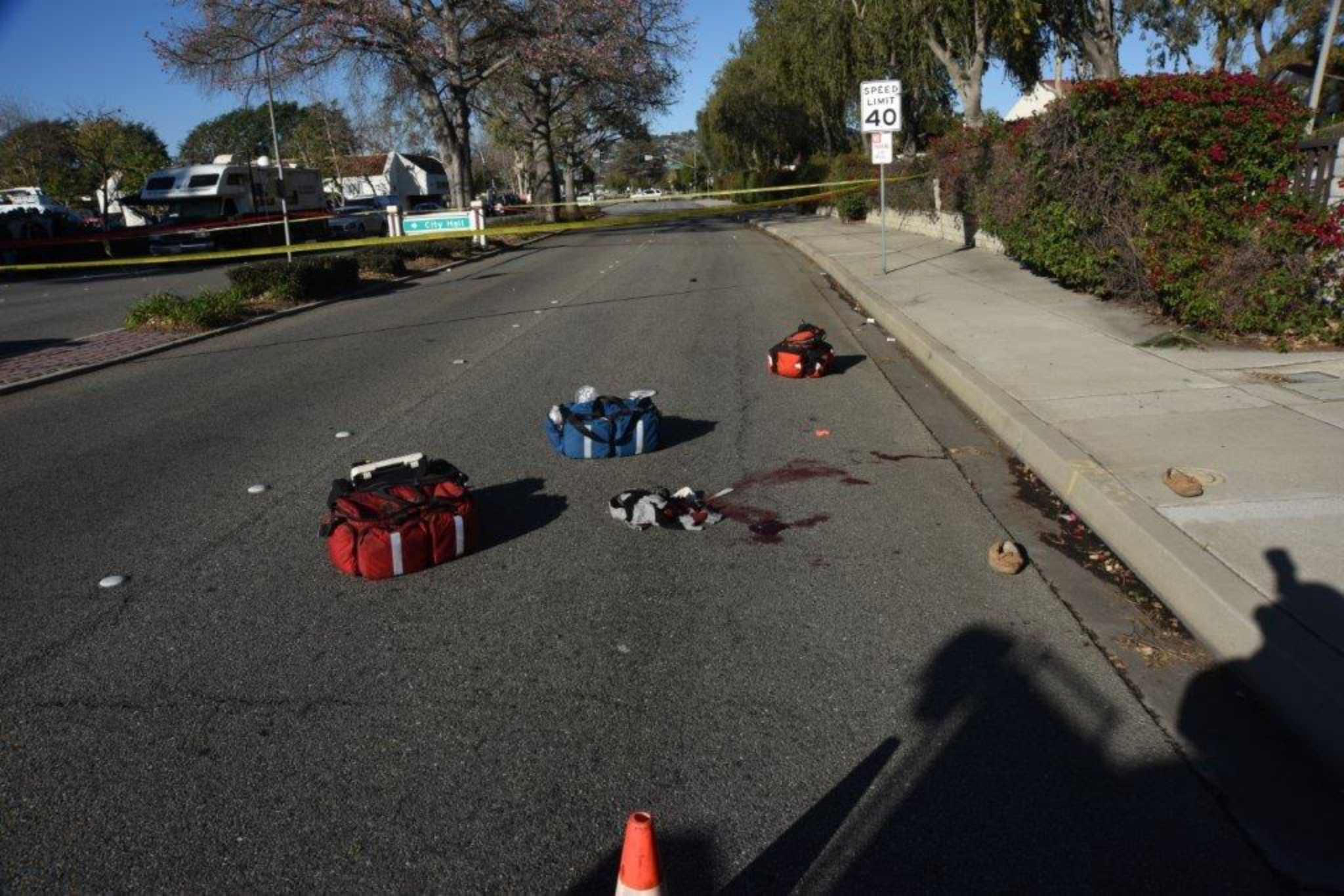






SPEED
LIMIT
40





SPEED
LIMIT
40

CITY LIMIT





Michaels
BIG LOTS

Sheriff

City Hall













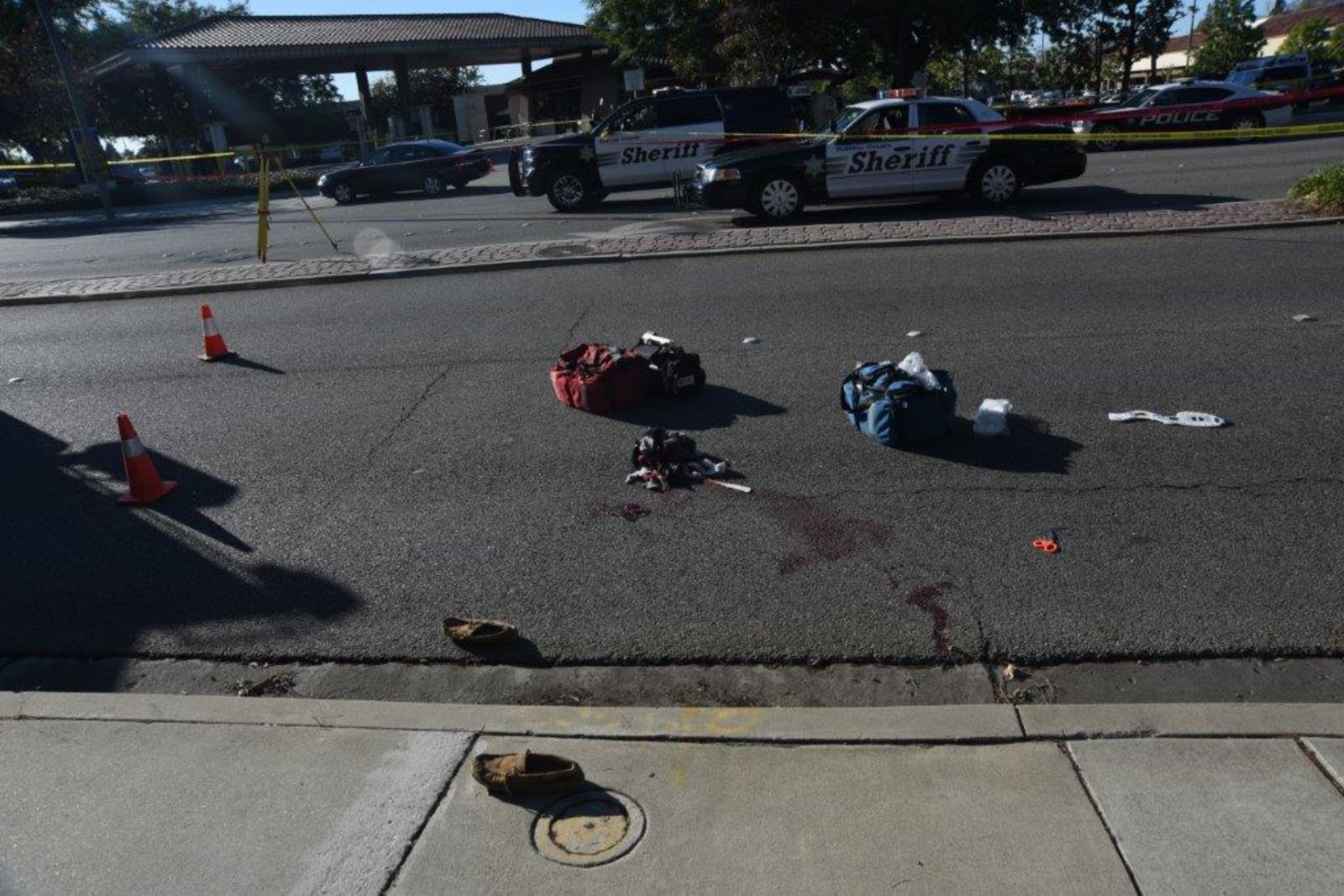


Sheriff

City Hall







Sheriff

Sheriff

POLICE



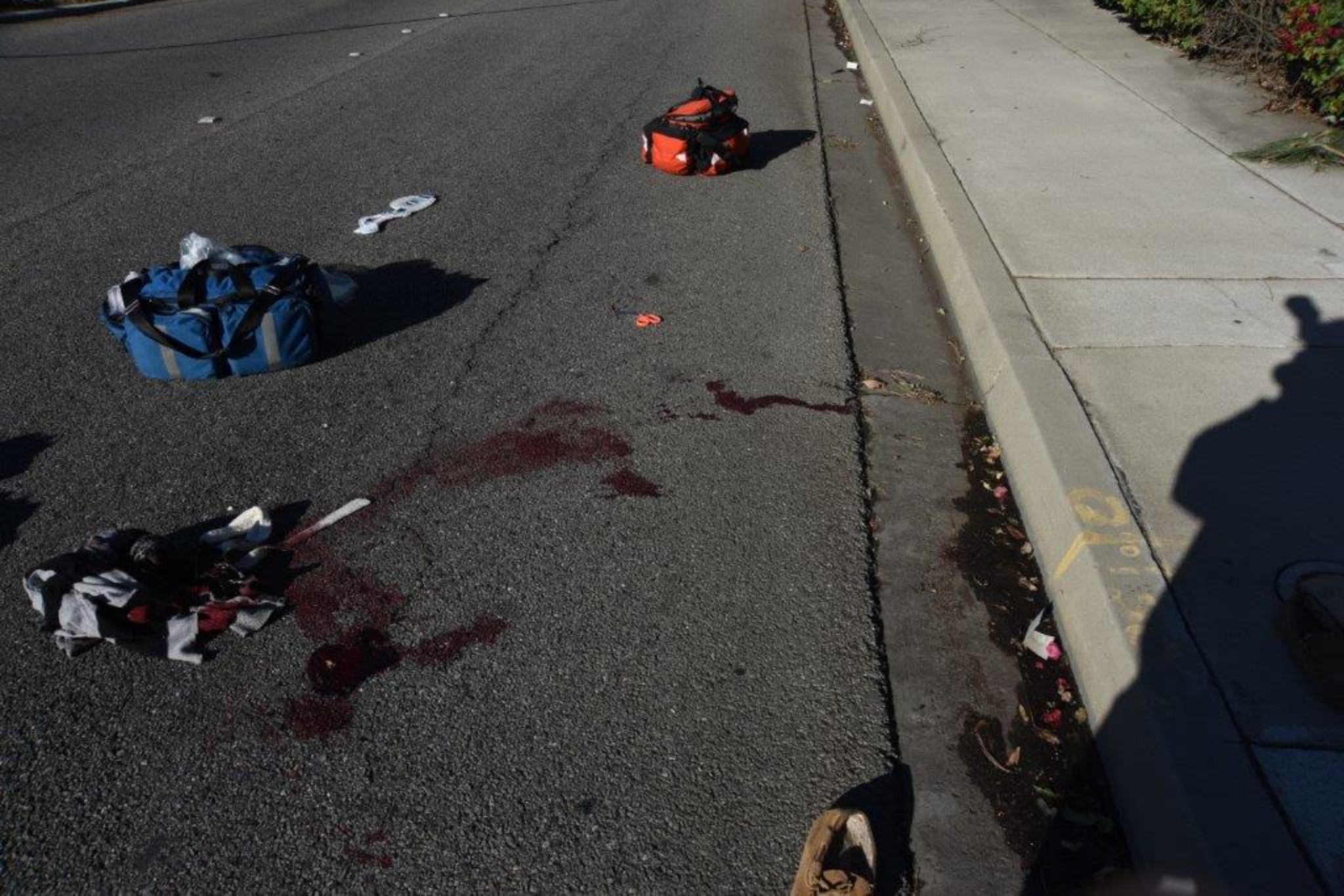
Sheriff

Sheriff

POLICE









heriff

Sheriff
VERMONT COUNTY





Michaels
BIGLOTS

LIMIT
40



SPEED
LIMIT
40

NO
PARKING
ANY
TIME



Lakeside St



SPEED
LIMIT
40

NO
STOPPING
FOR
PARKING





SPEED
LIMIT
40

NO
PARKING









St. Laroche









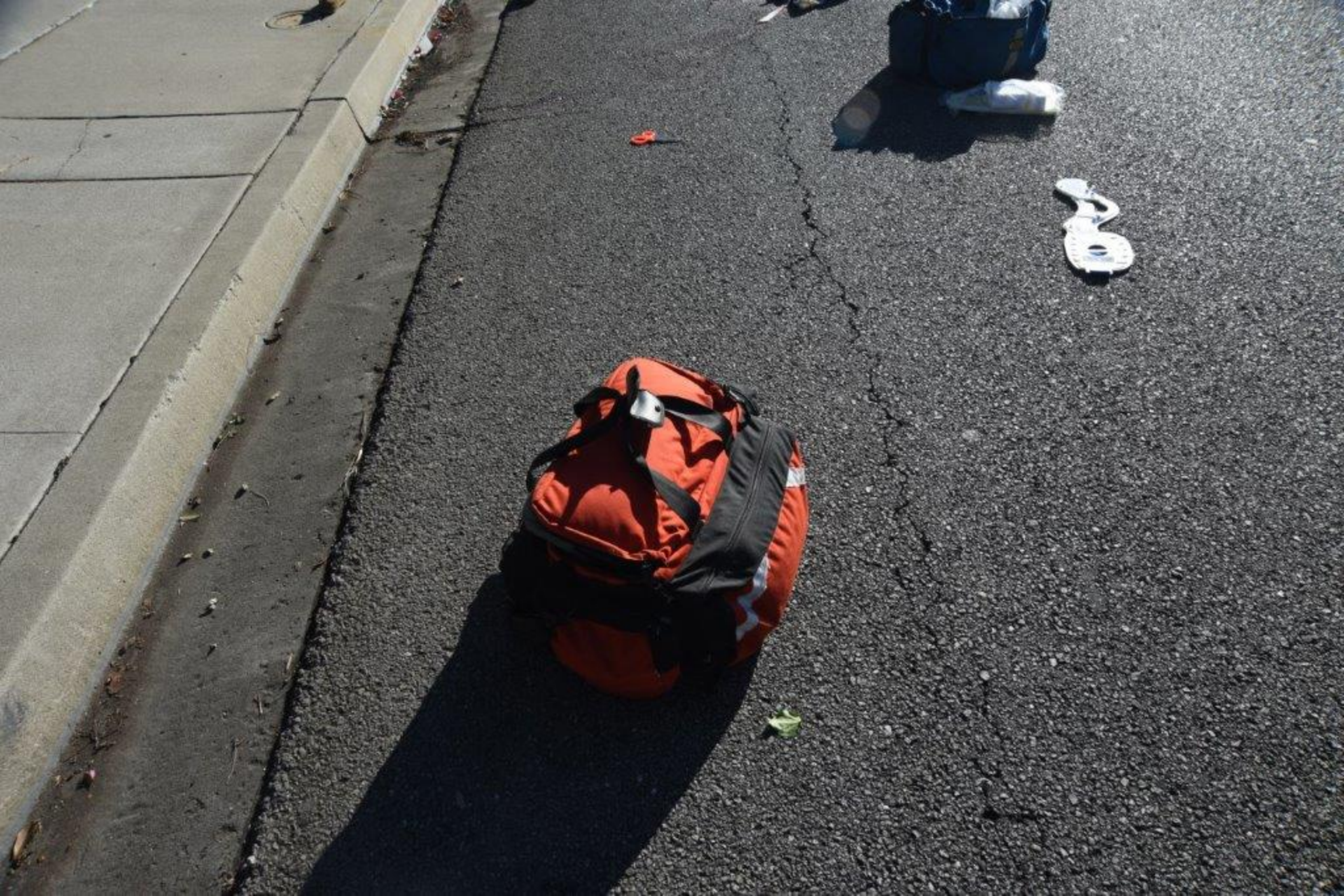












































CRIME SCENE DO NOT CROSS

CRIME SCENE DO NOT CROSS

CRIME SCENE DO NOT CROSS

CRIME SCENE DO NOT CROSS

CRIME SCENE DO NOT CROSS

CRIME SCENE DO NOT CROSS

SHERIFF LINE DO NOT CROSS SHERIFF LINE DO NOT CROSS

SHERIFF LINE DO NOT CROSS SHERIFF LINE DO NOT CROSS

SHERIFF LINE DO NOT CROSS SHERIFF LINE DO NOT CROSS

SHERIFF LINE DO NOT CROSS SHERIFF LINE DO NOT CROSS









8

12

6

4



Speed Limit
40







SPEED
LIMIT
40





1





1





2

2



2

2



2





3

3



3

3









3

4





4









5



5



5



51









SPEED
LIMIT
40

9

10

11

12

13

14

15

16

17

18

19

20

21

22



40

City Hall

4

13

11

19

17

10

15

18

20

16

22



7

6

8

9

10

6







9

7

8

7



7











10

9



9





CITY

14

13

11

19

17

18

15

10

16

22



Carace Pharmacy
Michaels

Sheriff

40

8



12

11

13

10



10



10
10







13

11

13

11









12



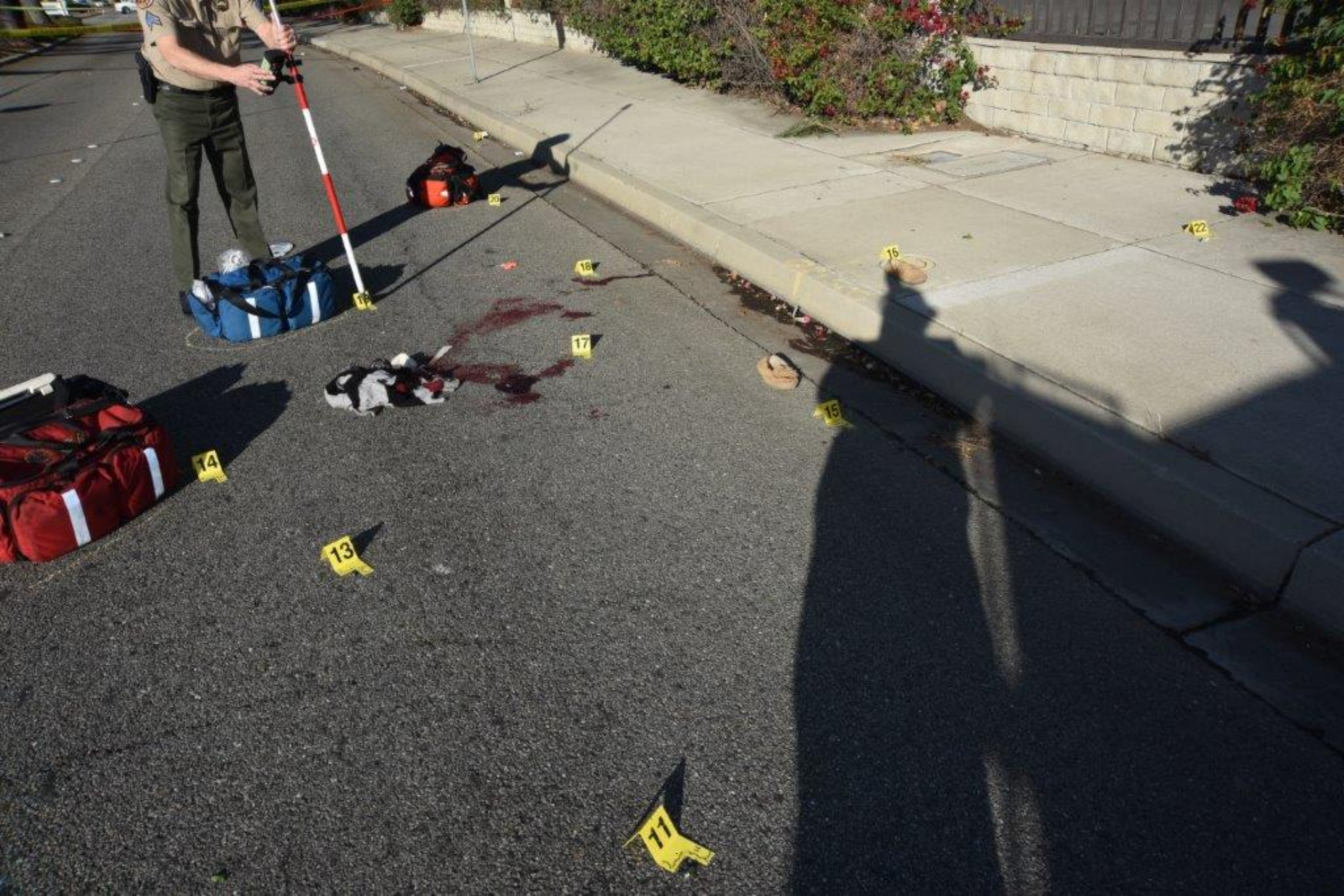
12











14

13

14

13



13

A yellow L-shaped evidence marker is placed on a dark asphalt surface. The marker has the number '13' printed in large black digits on its vertical side. The horizontal side of the marker features a black and white checkered pattern. A small, reddish-brown object is visible on the asphalt near the base of the marker.





14





19



14







SPEED
LIMIT
40

20

19

14

13

18

17

16

15

12



17

15

15

15



15





19

18

17

16

15

22



15

17

19

18

16

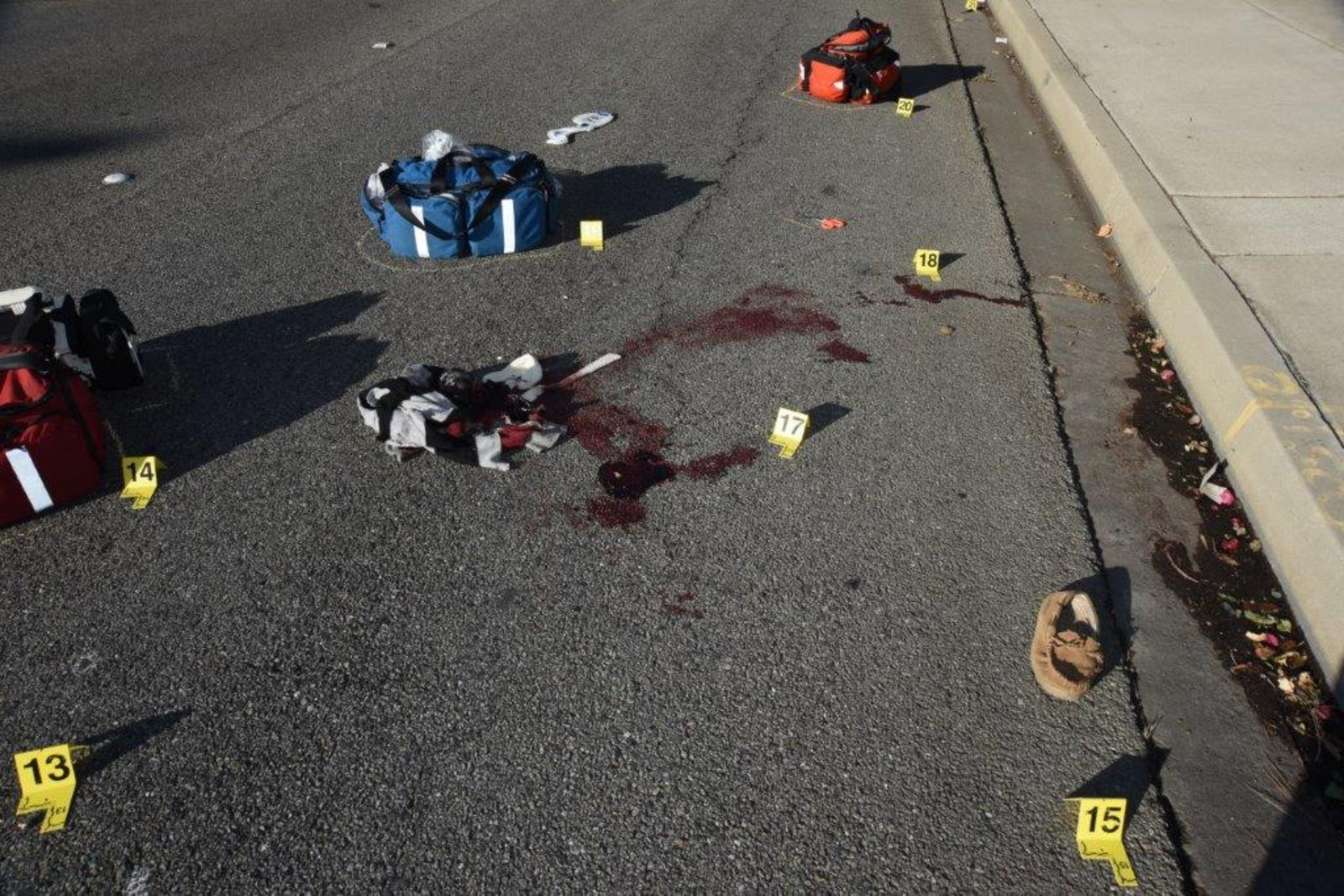
20



16

16





13

14

16

17

18

20

15



14

19

18

17





4

13

14

15

16

17

18

20



18

7



13

14

23

19

17

18

20

15

16



18



18





19

17



19





19

20



19



SPEED
LIMIT
40

19

20

18

16

23



20

21



19



20

21



20



21

City Hall

21



21



21

21



21

21



21

21









18

20

16

22

19

22



22



22





13

14

23

19

20

18

17

23



23



23



23







Serving the Community of
CAMARILLO

VENTURA COUNTY

FIRE DEPT.

NY
Fighters



FIRE DEPT.

6799





FIRE DE

6799





ATURA COUNTY



FIRE DEPT.

6799



Ventura County



FIRE DEPT.

6799





FIRE DEPT.

6799









304015









304015



Police

City of Camarillo

YK's



304015



Police

City of Camarillo

YK's





VALERO
2.594
2.694
2.794
2.994

GA 1454738

SETINA



CA EXEMPT
1454738







VENTURA COUNTY SHERIFF

CA EXEMPT
1454738

304015

POLICE

































WALTON
RESTAURANT
BAR

WALTON
RESTAURANT
BAR

40





Michaels
BYGONE

40

4

5

6

7

8

9

10

11

12

13

14

15

16

17

18

19

20

21

22

23

24

25

26

27

28

29

30

31

32

33



40

Coca-Cola
7-Eleven
SUNOCO

2

3

4

5

6

7

8

9

10





Bridgeway

40

5

10

11

12

13

14

15

16

Sherrill





40

8

9

10

Bridgeport 1600



The Village

Sheriff

40

9

10

12

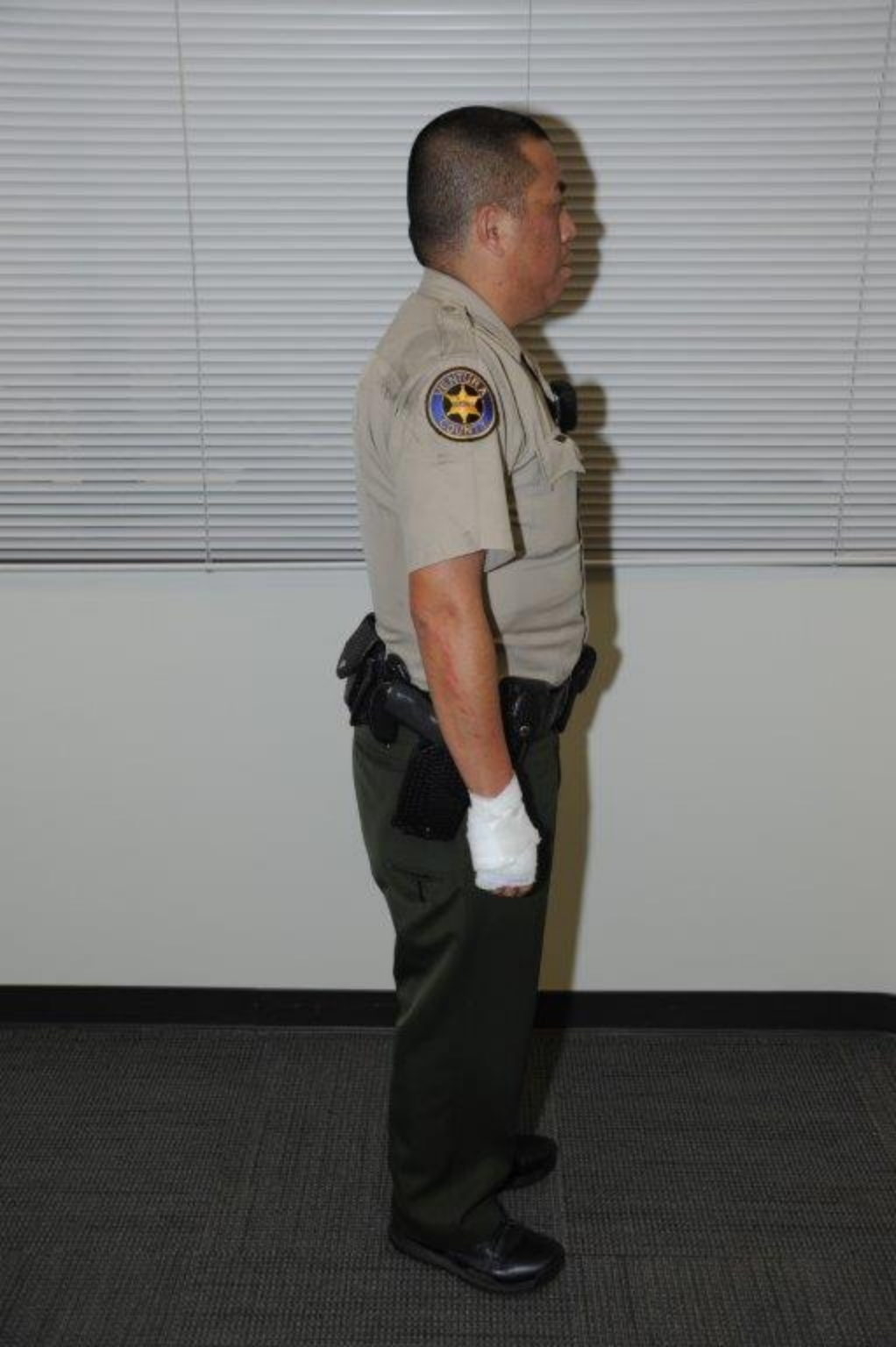
11

12



































































































INCHES

1

2

METRIC 1

2

3

4

5



INCHES

1

2

5

4

3

2

1

METRIC

























SIGSAUER
P226
.357
.40



5

10

12

MADE IN ITALY





SIG SAUER
9226
957
20





SIGSAUER
P226
357
40





SIGA 225 - NO EXETER NH -
FRAME MADE IN GERMANY

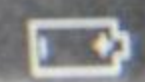


HOT

TLR-1 HL Patented
www.STREAMLIGHT.com



EXETER NH
GERMANY



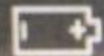
TLR-1H
www.streamlight.com



TLR-1
www.STRENGTH



—SIGARMS AND EXETER, MA—
FRAME MADE IN GERMANY



TLR-1 HL Patent
www.STREAMLIGHT.co



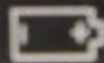
SIGARMS INC. EXETER NH -
FRAME MADE IN GERMANY



TLR-1 HL Patented
www.STREAMLIGHT.com



-SIGARMS INC. EXETER NH-
FRAME MADE IN GERMANY



TLR-1 HL Patented
SIGARMS INC.



GALINER OPTICS INC. TLR-1 HL
FRAME MADE IN GERMANY



TLR-1 HL[®] Patented
www.STREAMLIGHT.com





SIG SAUER F226 STAINLESS

SIGARMS INC.
EXETER-NH-USA

HOT

TLR-1 HL SN 121490 0215
www.STREAMLIGHT.com

SIG SAUER P226 STAINLESS

SIGARMS INC.
EXETER-NH-USA



TLR-1 HL S/N 121490
0215

ST
EXE




HOT



TLR-1 HL® S/N 121490
0215
www.STREAMLIGHT.com

SIG SAUER P226 STAINLESS

SIGARMS INC.
EXETER-NH-USA



SIG SAUER P226 STAINLESS

SIGARMS INC.
EXETER-NH-USA

Report # 15-2085997

Date: 12-16-15

FET: [REDACTED]

CAMERA: D700

ADDRESS: LOS ROBLES HOSPITAL $\frac{1}{2}$
CAMARILLO P.D.



ONLY ONLY
NO OTHERS

Carmen Dr

No Right Turn

USA
mini mart

Police





Carmel

Police

MALECO
25.59
26.04
2.75
2.98

WELCOME TO THE CITY OF CARMEL







Police

City of Camarillo

YES









Carmen Dr

USA
mini mart



FUSION

95 V6



Police

City of Camarillo

VENTURA COUNTY SHERIFF

CA EXEMPT
1454738

304015

POLICE



VENTURA COUNTY SHERIFF

Police

City of Camarillo

POLICE

304015

1454738



TV





VENTURA COUNTY SHERIFF

1A5A738

POLICE

JAMIE

Carmel Plaza

SCHOOL BUS



USA
mini mart

VENTURA COUNTY SHERIFF'S
OFFICE
POLICE

1154730

104015

LIMIT ALWAYS





VENTURA COUNTY SHERIFF

GA EXEMPT
1454738

304015
POLICE

Police

Country Plaza
Kushig's
BIG CITY









CRIME SCENE DO NOT CROSS

CRIME SCENE DO NOT CROSS

CRIME SCENE DO NOT CROSS

CRIME SCENE DO NOT CROSS

CRIME SCENE DO NOT CROSS

CRIME SCENE DO NOT CROSS

SHERIFF LINE DO NOT CROSS

SHERIFF LINE DO NOT CROSS

SHERIFF LINE DO NOT CROSS

SHERIFF LINE DO NOT CROSS

SHERIFF LINE DO NOT CROSS





Carmen Dr

USA
mini mart









SPEED
LIMIT
40

NO
PARKING
ON
SIGNAL





54

CAUTION
DANGER
DO NOT CROSS
ROAD WORK AHEAD





Ballye

Conroy St

Police

V





54

TARTAGUA SOCIETY

FIRE DEPT.

CRIME SCENE DO NOT CROSS





← City Hall

ONE WAY →

ONE WAY

SPEED
LIMIT
40







SHERIFFS LINE DO NOT CROSS

SHERIFFS LINE DO NOT CROSS

SHERIFFS LINE DO NOT CROSS





1255813

54

KEEP
BACK

CAUTION













